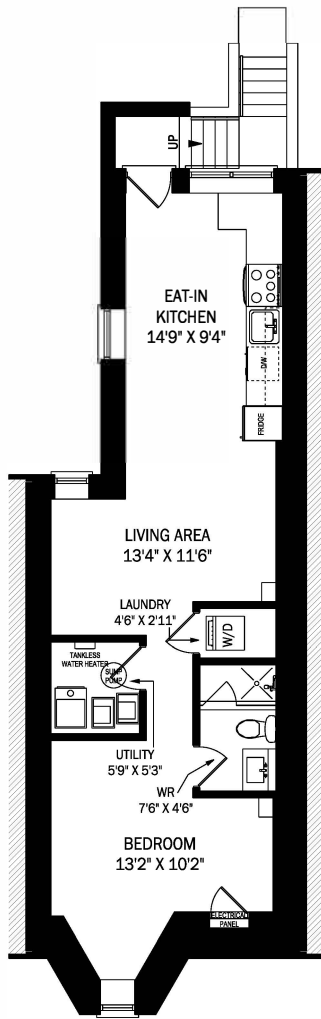
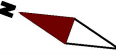
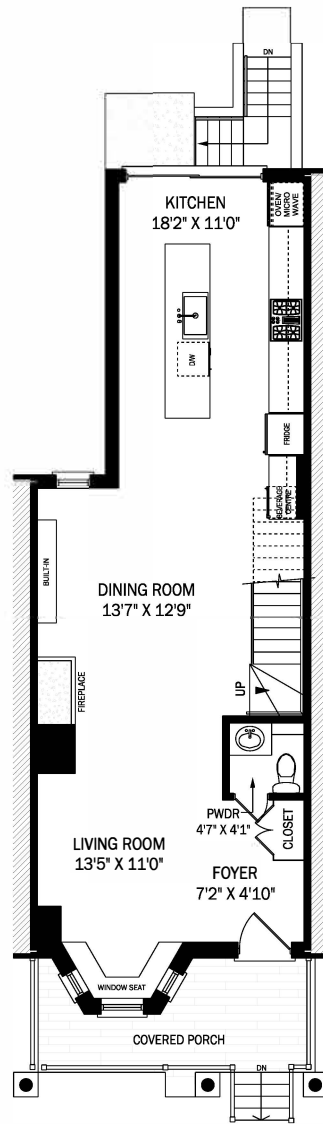


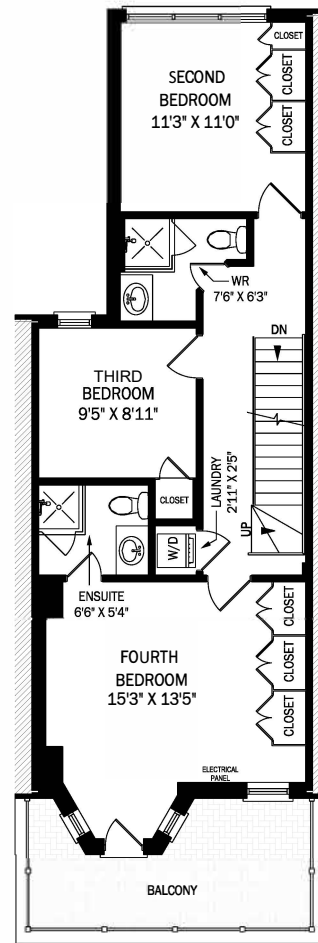
121 MAJOR STREET, TORONTO



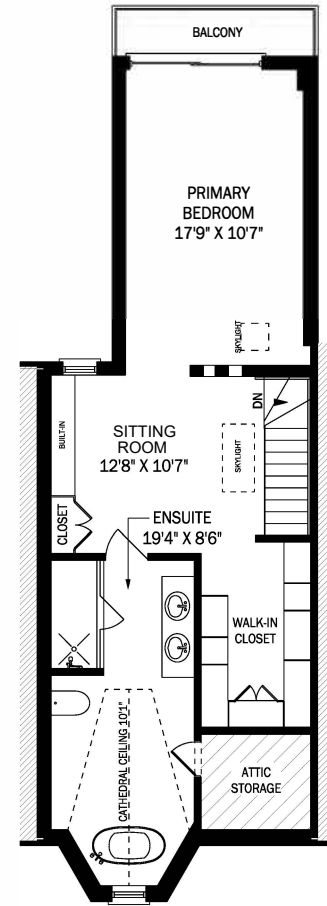
LOWER LEVEL - 722 SQUARE FEET



CEILING HEIGHT 10'4"
MAIN FLOOR - 722 SQUARE FEET



CEILING HEIGHT 8'4"
SECOND FLOOR - 722 SQUARE FEET



CEILING HEIGHT 9'10"
THIRD FLOOR - 677 SQUARE FEET

